

MEADRAIN® Supreme



Material: Polymer concrete
Locking System: PROFIX locking recess
Edge Protection: Cast iron edge
Accessories: Catchbasins
 Solid & outlet end caps
 Installation brackets
 Chair bracket

EN1000
EN1500
EN2000
EN3000



EN1000 Accessories

Silt Box



Total Width: 5.5"
 Material: Polymer Concrete
 Edge protection: Integrated cast iron edge

product description	length [inches]	total height [inches]	product #	lbs/ unit
EN 1000.EK	19.7	23.0	157291	67.2

For large gully, see page 33.

End Caps



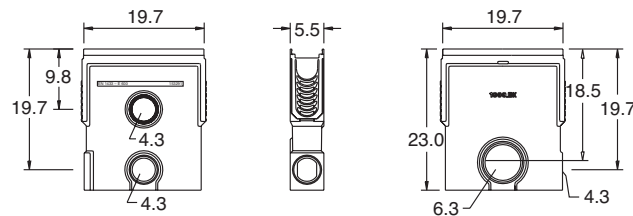
Total Width: 5.5"
 Material: Polymer Concrete
 Edge protection: Integrated cast iron edge

product description	product #	lbs/ unit
EN 1000.SE for channel start/end	153371	2.9
EN 1000.E for channel end with HD-PE outlet connector Ø 4" with sealing ring. Suitable for channel EN1000	153373	2.4
EN 1005.E for channel end with HD-PE outlet connector Ø 4" with sealing ring. Suitable for channel EN1005	153375	2.9
EN 1010.E for channel end with HD-PE outlet connector Ø 4" with sealing ring. Suitable for channel EN1010	153377	3.5
EN 1015.E for channel end with HD-PE outlet connector Ø 4" with sealing ring. Suitable for channel EN1015	153379	4.0
EN 1020.E for channel end with HD-PE outlet connector Ø 4" with sealing ring. Suitable for channel EN1020	153381	4.4
EN 1000.RWH for change at channel run high point, suitable for all channels EN1000.0 - EN1020.0	153383	2.9
EN 1015.RWT for change at channel run low point, suitable for channel EN1015	153385	2.4
EN 1020.RWT for change at channel run low point, suitable for channel EN1020	153387	2.4
EN 1000.UE for connecting elements EN1020.0 and EN1030.0	153391	0.7
1000 outlet bracket	150900	3.0
1000 extension bracket	150920	3.2



Outlet lip sealing ring for water-tight channel runs
 Suitable for all silt boxes and gullies

product description	product #	lbs/ unit
sealing ring Ø 4"	153883	0.1
sealing ring Ø 6"	153885	0.1



MEADRAIN® Top

EN1000 Grate Options

Total Width: 4.8"

Locking System: PROFIX/CLIPFIX



Loading class C with CLIPFIX



product description	material	length [inches]	product #	Inlet sectional area [in ²]	lbs/unit
slotted grating 0.4/3.54 slots	ductile iron	19.7	152403	27.1	7.0
slotted grating 0.2/3.54 slots	ductile iron	19.7	152405	13.5	7.7
mesh grating 0.8/0.4 mesh	galv. steel	39.4	152603	120.0	11.0
mesh grating 0.8/0.4 mesh	galv. steel	19.7	152608	60.0	5.7
slotted grating	galv. steel	39.4	152713	43.4	12.1
slotted grating	galv. steel	19.7	152718	21.7	6.2
solid cover	ductile iron	19.7	152720	-	11.9



Loading class D with PROFIX



product description	material	length [inches]	product #	Inlet sectional area [in ²]	lbs/unit
slotted grating 0.47/4 slots	ductile iron	19.7	152521	31.0	9.5
ductile iron mesh grating cover wave	ductile iron	19.7	152524	42.3	8.4



Loading class E with PROFIX



product description	material	length [inches]	product #	Inlet sectional area [in ²]	lbs/unit
slotted grating 0.47/4 slots	ductile iron	19.7	152523	31.0	9.5



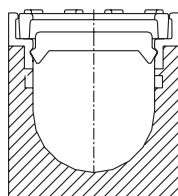
Loading class F with PROFIX



product description	material	length [inches]	product #	Inlet sectional area [in ²]	lbs/unit
slotted grating 0.47/3.78 slots	ductile iron	19.7	153095	30.7	11.0

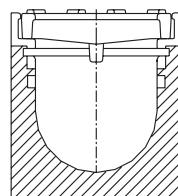
Note

All other CLIPFIX and STANDARD grating covers possible with clear width 4 inches. For bolted gratings, see page 35. For additional grate options, please see page 50.



CLIPFIX

CLIPFIX: Recesses in channel edge accepts grate with pre-attached lock device to ensure positive locking of grate to channel. Removal of grate provides an unobstructed channel cross section for simple cleaning. Available on J1000 and S1000.



PROFIX

PROFIX: Recesses in channel edge accepts grate with pre-attached 4-point spring steel locking mechanism to ensure positive locking of grate to channel. Removal of grate provides an unobstructed channel cross section for simple cleaning. Available on all EN1000, EN15000, EN2000, and EN3000 series channels.

All units in inches unless otherwise noted.